

oakheart



£375,000

Guide Price

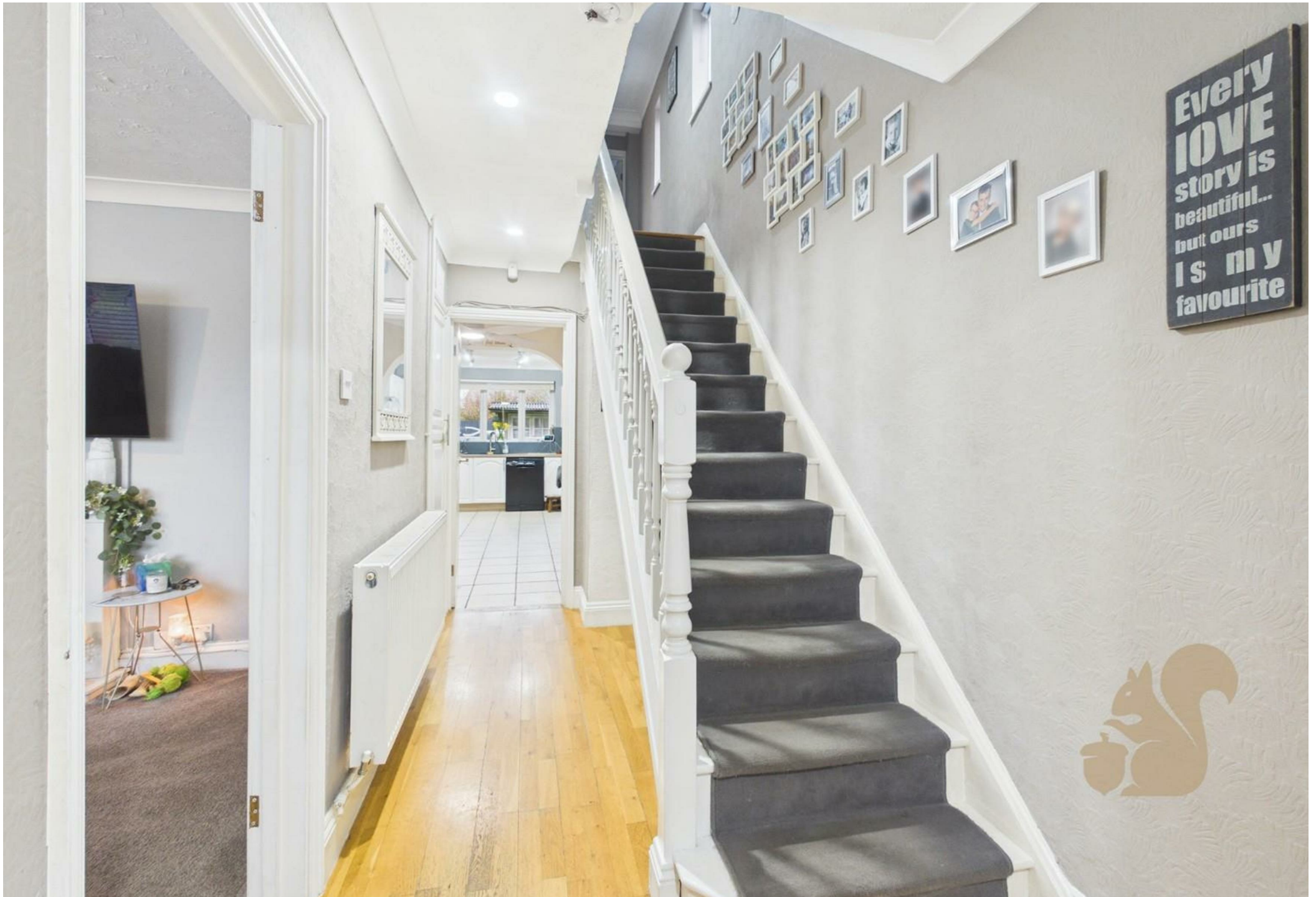
Gosbecks Road, Colchester

Guide Price: £375,000 – £400,000.

transport links, making it an ideal home for growing families.

Situated on Gosbecks Road in the popular Shrub End area of Colchester, this extended and well-presented four-bedroom semi-detached family home offers spacious and versatile accommodation throughout. The property is conveniently located within close proximity of local primary and secondary schools, nearby amenities, and excellent











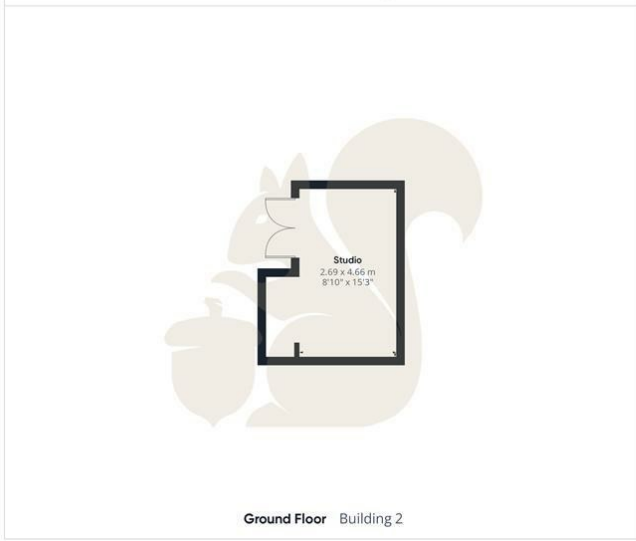
**oakheart**

Approximate total area<sup>1)</sup>

130 m<sup>2</sup>  
1398 ft<sup>2</sup>

Reduced headroom

1.4 m<sup>2</sup>  
14 ft<sup>2</sup>



(1) Excluding balconies and terraces

Reduced headroom

..... Below 1.5 m/5 ft

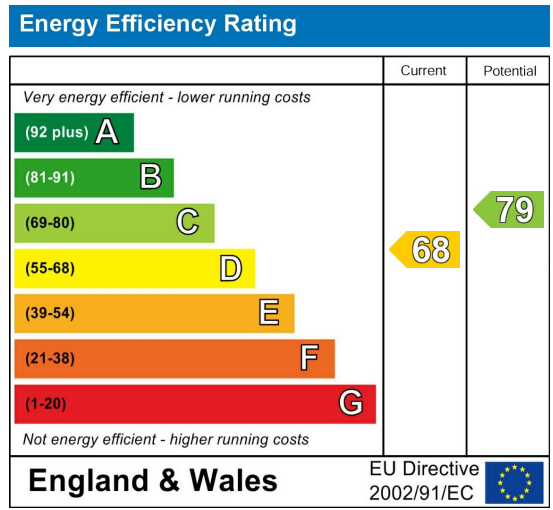
Calculations reference the RICS IPMS 3C standard. Measurements are approximate and not to scale. This floor plan is intended for illustration only.

**GIRAFFE360**

Local Authority:  
Colchester

Tenure:  
Freehold

Council Tax Band:  
C



Agents Note: Whilst every care has been taken to prepare these particulars, they are for guidance purposes only. All measurements are approximate and are for general guidance purposes only and whilst every care has been taken to ensure their accuracy, they should not be relied upon.